

YORE LORE

Baldwin County Genealogical Society
P.O. Box 108, Foley, Alabama 36536

Volume 29 No 5

May 2021

Baldwin County Genealogical Society Presents

DEBRA KUHL

PRESERVING ORAL HISTORY

May 8, 2010 ~ 10 a.m. Meeting Room, Foley Public Library



Back by popular demand, **Debra Kuhl** will present program the May 8th, 2021, program on “**Preserving Oral History**,” a critical first phase of genealogical research and data preservation. Because those who provide the information are generally older members of the family, both their lives and their memories are at risk of being lost to time.

Debra is a born genealogist at heart and shares freely her knowledge and experiences for others. She, and her husband, having traveled living in many states, are retired in Florida where she is currently serving as Vice-President of the West Florida Genealogical Society in Pensacola.

All meetings are open to interested public.

~~

DUES are Due in June, please.

Obit Committee meet every Wednesday, 1 p.m. in Genealogy Collections Room

BCGS Board Meetings will continue to meet at 10 a.m. Board Room.

~

BALDWIN COUNTY GENEALOGY SOCIETY OFFICERS AND BOARD MEMBERS

OFFICERS 2021-2022

PRESIDENT - Peg Power
cmpower@yahoo.com
812-249-0185

VICE PRESIDENT - *Vice President—*

TREASURE - Tina Graham
tdrcgraham@yahoo.com
251-978-2137

SECRETARY - Billie Nardell
bnardell@yahoo.com
251-504-0801

CORRESPONDING SECRETARY - Maureen Lee
leema812@gmail.com
251-978-0445

BOARD MEMBERS

EXPIRING 2022 Pat Brummett pattybee55@yahoo.com 860-771-3951
Don Ouellette eagles0037@bellsouth.com 251-626-6442

EXPIRING 2023 May Alenko maoysterbay@gulfnet.com 251-968-3186
Auriette Lindsey dahlia@tmlindsey.com 850-972-8367

LIFETIME ALTERNATE

Dot Brown tomdot@gmail.com 251-986-3186

Mike Glass mnglass@gulfnet.com 251-9475077

Joe Web sun_dog07@yahoo.com 251-943-5779

YORE LORE EDITOR Jeanette Bornholt jbornholt@cityoffoley.net 251-943-1991

YORE LORE CHAIRMAN Don Ouellette eagles0037@bellsouth.com 251-626-6442

MEMBERSHIP CHAIRMAN Maureen Lee. leema812@gmail.com 251-978-0445

OBITUARY COMMITTEE

Tina Graham
tdrcgraham@yahoo.com
251-978-2137
Billie Nardell
bnardell@yahoo.com
251-504-0801

Maureen Lee
leema812@gmail.com
251-978-0445
Peg Power
cmpower@yahoo.com
812-249-0185

BALDWIN COUNTY GENEALOGICAL SOCIETY GENERAL MEETING ~ APRIL 10 , 2021

DATE April 10, 2021

MEMBERS/GUEST 12

GUEST SPEAKER: Mike Glass on PRINT. PUBLISH. SELL.

CALL TO ORDER: The meeting was called to order by Tina Graham at 11:40 AM.

MINUTES OF PRECEDING MEETING- Are published in "Yore Lore" The minutes were approved as written in the "YORE LORE"

TREASURER'S REPORT: May Alenko stated there was \$934.95 in our checking account. She still had some deposits to make.

COMMITTEE REPORTS:

Membership: Maureen Lee stated that we had two new members Brenda Janzen and Charles McAllister.

Obituary: Billie Nardell stated that the obituary committee was up-to-date on current obituaries and they are still working on obituaries starting in 1900s in Baldwin County.

ACQUISITIONS: No acquisitions were listed

OLD BUSINESS: there was no old business to discuss

NEW BUSINESS:

- The slate of officers for the 2021 - 2022 year was presented to the general membership. Colette Bailey made a motion we close the Nominations and accept the slate of officers. Mike Glass 2nd the motion. The slate was approved as stated by the general membership. The new officers for the 2021 - 2022 year will take affect at the next meeting in May. The new officers are President Peg Power, Treasurer Tina Graham; Recording Secretary Billie Nardell; Corresponding Secretary Maureen Lee. At this time we still need a Vice-President.
- May Alanko will be removed from the checking account at Regions Bank; Tina Graham, new Treasurer, Peg Powers, new President will be put on the checking account
- There is a Committee working on updating the By-Laws

UPCOMING EVENTS: Debrah Kuhl will be the speaker at the May 8, 2021 meeting. She will speak on Preserving Oral History.

BREAK THROUGHS:

- Bob Burnett ask if anyone had done research or updated information on Pine Rest Cemetery in Foley. He works with Find-A-Grave to locate and take pictures of different graves. He would like to have help mapping the different areas of Pine Rest Cemetery that are not on Find-A-Grave and to update grave information to give to Pine Rest.
- Coletta Bailey is working on Metal winner in WWII from Baldwin County. She does a display at the Baldwin Heritage Museum each year.

HOSTESSES: The Hostesses for the meeting were Peg Power and Maureen Lee. The Hostess for the May meeting will be Maureen Lee and Tina Graham

DOOR PRIZES AWARDED: There was one door prize

ADJOURNED: The meeting was adjourned at 12:07pm by Tina Graham to meet again on May 8 , 2021 at 10 AM in Foley Library Meeting Room

Respectfully submitted; Billie Nardell, Recording Secretary

~~



Family Bible records as genealogical resources

Did you know Bible records can be used as a substitute for vital records if the publication or printing date of the Bible was prior to the date of the event. Proof can be seen on one of the scanned Bible records in our collection on which each page is stamped "I hereby certify the above is a true and correct copy of the original this 3rd Day October 1995 (signed) William J. McCullers City Clerk, City of Live Oak, FL." And that is more recent time.

*"The Revolutionary War pension and bounty-land warrant application files contain many 18th-century documents such as commissions, discharges, deeds, wills, diaries, journals, muster rolls, newspaper clippings, letters, marriage certificates, and family Bible pages."*¹

Do remember if entries are all in the same penmanship, ink or writing tool, it is an indication they were probably copied from another source and written at a later date. You should maintain your professional skepticism. Elizabeth Mills, In her book *Evidence Explained*, a primer on citing genealogical sources, author Elizabeth Mills explains: "As researchers, we can take no record at face value."² She cautions that with family Bibles, dates and entries may have been intentionally misrepresented: "A marriage entry in an original family Bible might have been backdated to hide the early birth of a firstborn."³ When citing the Bible as a source, Mills advises that the citation address at least two key issues: "whatever provenance is known for the material; any characteristics (ink, penmanship, damage, etc.) that affect your analysis or interpretation of the data within this source."⁴ Example in photo shown of different handwritings in family Bible pages.

Online Resources and Websites Databases: [DAR Bible Records and Transcriptions](#) at [DAR Genealogy Research](#); [Family Registers and Bible Records \(NEHGS\)](#) at [American Ancestors](#) (\$) – index and images; [The Family Bible Index and the Family Bible Preservation Project](#) at [Yancey Family Genealogy](#) – index and images; Transcriptions, Indexes, and Images; [Bible Records at Ancestor Hunt](#) – index and images ;[Bible Records at Digital Public Library of America](#) – Index and images; [Bible Records at International African American Museum Center for Family History](#) – images; [Bible Records Online](#) – transcriptions; [Family Bible Records at Allen County Public Library Genealogy Center](#) – transcriptions; [Family Bible Records at Ancestors at Rest](#) – transcriptions; [Index to Early Bible Records at Learn Web Skills.com](#) – indexed; [U.S., Select Family History and Bible Records Index at Ancestry](#) (\$) – index

Sources: *The importance of Family Bibles in Genealogy Research*, <https://familyhistorydaily.com>; excerpts from: 1. Nudd, *Genealogy Notes*; 2. Mills, p. 33; 3. Mills, p. 140; 4. Rising, *NGSQ*, p 259; *Montgomery History*, Rockville, MD, <https://montgomeryhistory.org/bibles/family-bible-and-genealogy-research/>; https://www.familysearch.org/wiki/en/United_States_Bible_Records; Carmach, *NGSQ*, p. 297

~
Civilian Conservation Corps (CCC) in Baldwin County, Alabama

In what would later be called “The Hundred Days,” President Franklin D. Roosevelt revitalized the faith of the nation by setting into motion a “New Deal” for America. One of these New Deal programs was the Emergency Conservation Work (EWC) Act, more commonly known as the **Civilian Conservation Corps**. With this action, he brought together two wasted resources: young men and land.

President Roosevelt promised if granted emergency powers he would have 250,000 men in camps by the end of July, 1933. The speed with which the plan moved through proposal, authorization, implementation and operation was a miracle of cooperation among all branches and agencies of the federal government. It was a mobilization of men, material and transportation on a scale never before known in time of peace.



W.P.A. and CCC Memories – Fort Morgan area..... Dave Rich

“These pictures show my mother’s youngest brother. He was in the CCC camp which was located just north of the State Park. He died of pneumonia while in the camp, Robert Edward Osborne 1917-1938. He is buried in Pine Rest Cemetery in Foley. I was 3 years old at the time. Robert came to Foley along with his father William C. Osborne and his brothers Frank, William A., James and Arnold. His brothers were in the W.P.A camp at Fort Morgan. They brought a huge rattlesnake in a cage on the back of a flatbed truck one Friday night. They proceeded to parade it around town for everyone to see. The streets at that time were all dirt.”

CCC Camps in Baldwin County, Alabama ~ Civilian Conservation Corps Legacy

PROJECT	CO. #	DATE	RAILROAD	POST OFFICE	LOCATION
SP-4	1425	7/14/1935	Foley	Foley	10 mi S – Gulf State Park
SP-6	259	6/3/1934	Foley	Foley	10 mi S – Gulf State Park
P-61	484	6/25/1933	Bay Minette	Bay Minette	1 mi S
P-79	1490	7/2/1940	Robertsdale	Robertsdale	5.7 mi E
SP-6	2436	1-16-1942	Foley	Foley	Gulf State Park

Camp P-61 was established on June 25, 1933, by Company 484 at **Bay Minette**. As soon as they completed the camp, their work project began across Baldwin County. **John H. Guinn** arrived at camp during the summer of 1933, spending two weeks in camp “conditioning” (getting into physical shape) before joining the work crews, building access roads for fire trucks. He worked with the civil engineer, laying out the roads, and was soon promoted to assistant leader earning \$36 each month. During fire season, he patrolled all of Baldwin County. He also manned the fire towers, most of them 70-foot wooden towers, but there were also taller steel towers. (*Mr. John H. Guinn interview, November 18, 2002*).

Henry T. Roberts remembers the CCC camp (**P-61**) on Hwy 31 south in Bay Minette, which later became the NYA Camp where his father was camp director. **Dalton James Smith** added the CCC camp was built on the site of the old **Hand Airport** on which **Edwin Hand** and his brother had an Stinson airplane they kept there. The **National Youth Administration (NYA)** was also a New Deal agency sponsored by the Presidency of **Franklin D. Roosevelt**. Many a youth learned training that would be a prelude to armed services that most of them entered after Dec 7 1941, writes **Henry T. Roberts**.

On October 24, 1934, **The Onlooker**, a weekly newspaper of Baldwin County, reported that there were 45 observation towers on state and privately owned land in Alabama. The state owned 13 steel towers, three towers of pole construction, and one stone tower.

Private landowners, in cooperation with the State Commission of Forestry and federal agencies, had built five steel towers, 12 towers of sawed timber, and 11 towers of pole construction. Baldwin County had 15 towers, with several more being considered.

On July 2, 1940, **Camp P-79** was established at **Robertsdale** to assist in the fire protection of the forested lands in Baldwin County. The county had been divided into four districts, according to a March 7, 1940, article in *The Onlooker*, and “**Forest Riders**” patrolled the forests, protecting several thousand acres. Landowners were charged six cents per acre for this protection. The CCC camp would help with the additional fire towers being considered. **Camp P-79** was approved through March 1942.

Five Army Officers and 25 enlisted men of the Civilian Conservation Corps, forming an advance guard arrived at **Foley**, June, 1934, to establish camp (**SP-6**) at the site of Alabama New **Gulf State Park**, directly south of Foley, which would become the scene of active development immediately with the remainder of the company to arrive from a north Alabama camp. “**Gulf Breeze**” a monthly tabloid newspaper of the CCC Camp at **Gulf State Park** was “adjudged” outstanding among the publications of all the camps in the nation and was presented the 1937 certificate of award. The paper had recently inaugurated a new headline system which brought inquiries and comments from some of the country’s leading schools of journalism. Managing Editor was **L. F. Evans** with other members of paper’s staff being: **James D. Diamond**, editor; **R. J. Mitchell**, business manager; “**Red**” **Lloyd**, reporter; **Eddie Kahalley**, sports. The publication was printed at the plant of *The Onlooker*.

In the summer of 1940, a survey group visited one of four ‘midden accumulations’ (*shell heaps associated with past human occupation*) located about 4 miles from the end of the peninsular. It was designated as the “**Gulf Breeze**” site after a “little summer resort” not far from the **Pensacola Bay** bridge on property held permanently as **United States Naval Reservation**. In 1940, a temporary CCC side-camp from **Foley**, Ala., was established near the spot.

The Department of Interior experimented with planting giant redwood trees at **Gulf State Park** with over 100 seedling shipped from **Fruition, California**, planting them in the park about a half-mile from the Gulf of Mexico with uncertainty the trees would survive the local soil and climate. By October 1938, there were 194 men supervised by **1st Lt. Herbert O. Jones, Jr** within the Gulf State Park, that already comprised 4,500 acres, building a combination building facing the Gulf of Mexico, drilling a well, installing water and sewage disposal system, building and surfacing roads, moving and planting trees, land and pond improvement. There was also an education system in place with 16 teachers where enrollees learned to read and write, 5 finishing the sixth grade, 12 taking high school courses. Thirty-two had received civilian jobs because of their vocational training.



The crew that built the Gulf State park. Photo courtesy of Mr. Jewel Jernigan, who was park of the CCC Crew.

In the early 1930s, local landowners and the United States government donated the land that became **Gulf State Park**. From 1933 to 1939, the **Civilian Conservation Corps (CCC)** was engaged to create the Park as part of the nationwide public work relief program enacted by President Roosevelt’s New Deal to provide much needed training and employment during the Great Depression.

The young men lived in large tents until more permanent quarters were built and were paid \$1 a day, most of which went home to support their families. Some of the remnants of the old CCC work camp, the remains of the barracks, sawmill and old cabin foundations are still visible near the Learning Campus. An excellent archive of stories and photographs is on display in the small museum building at the Park’s west entrance.

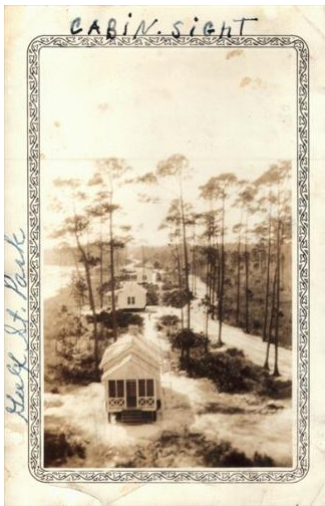
The CCC construction projects included a casino built on the beach, featuring a dance hall and concession stand, a bunkhouse for the lifeguards to live in during the summer, trails, and more.



CCC worker planting trees



CCC camp barracks, simple construction, wooden floors, poor interior lighting similar to above of Bethel CCC 528



CCC built "Eagle Cottages" on Lake Shelby's north shoreline.

Photos from J. O. Evans, in CCC Camp at the Gulf, was a former superintendent of Desoto State Park.

"Wade and J. O. Evans"

During this time, the first cabins were built along the north shore of Lake Shelby. When the CCC built the first cabin, they built cabins 1-16, skipping the number 13 while Cabins 3, 7 and 11 – *lucky dice numbers* – were built sideways facing east. Their construction is deliberately reminiscent of the traditional Alabama 'fish camp' – the rustic cabin on stilts that became so popular in the early days of Alabama's coastal hunting and fishing trips. In 2019, the 11 Eagle Cottages became a proud member of the National Geographic Unique Lodges of the World



The CCC gave the world this wonderful park, and building the park gave these hardworking young men vital training and employment during the Great Depression.

Sources: *Civilian Conservation Corps Legacy* www.ccclegacy.org; *Protecting Alabama's Forest, the Civilian Conservation Corps Project in State and Private Forest, 1933-1942* by Robert G. Pasquill, Jr., Alabama's TREASURED Forest, Fall 2009, pgs 16-19; Source: *Fort Morgan New June 2019 no 148* newsletter, pg 6; Fort Morgan Civic Organization, www.fortmorgancivic.org; *Foley CCC Camp to be located on Gulf Coast*, The Onlooker, May 1934, pg 1; ditto, June 1934 pg 1; ditto, Jan. 1938; *The Civilian Conservation Corps in Alabama, 1933-1942, a great and lasting good* by Robert Pasquill, Jr. pg 138; "midden accumulation", Wikipedia; *Archeology of the Florida Gulf Coast* by Gordon R. Willey, Smithsonian Institution Miscellaneous Collections vol 113; *A State Park for the Beach*, <https://www.eaglecottagesatgsp.com/history.htm>; Henry T. Roberts, Sept 23, 2014, Andalusia, Ala; Dalton James Smith, Oct 15, 2014, www.facebook.com/groups/104112448758; *Memory Book of CCC Company 1425*, April 4, 1941 by H. Travis Parker, Jr.; *Civilian Conservation Corps., Camp in Alabama*, postcard, 1933-1942? Broward County, Florida, Digital Archives; *Camp Inspection Records, 1933-42 Entry 115, Box 2-3*, Records of the Civilian Conservation Corps. (RG 35), Archival Research Record Catalog; compiled by Jeanette Bornholt, Librarian